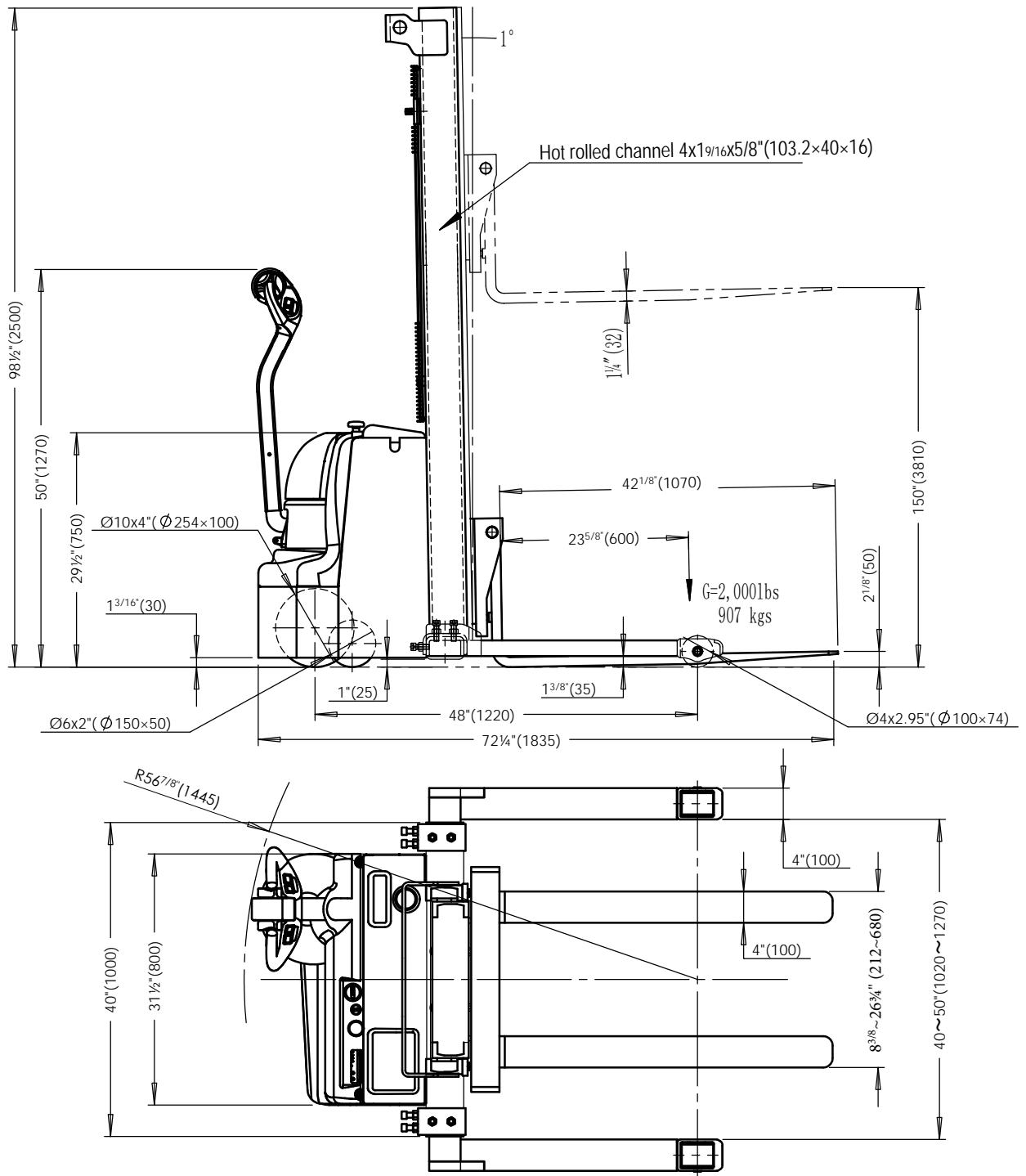


S-150-AA-DM (2,200 lbs Fully Powered Stacker with Adjustable Forks & Adjustable Legs)



Specifications

Model # S-150-AA-DM
 Capacity (UDL): 2,200 lbs (0-62")
 Capacity (UDL): 1,500 lbs (62-118")
 Capacity (UDL): 1,000 lbs (118-150")
 Lift Height: 150"
 Lowered Height: 2 1/8"
 Adjustable Forks & Adjustable Legs Overall
 Mast height (Retracted): 98 1/2"
 Overall Mast height (Extended): 171.85" (4365)
 Drive Wheel: Ø10x4"
 Front Wheel: Ø4x2.9"
 Stabilizer wheel: Ø6x2.0"

VESTIL MANUFACTURING CORP.

Model: S-150-AA-DM

Description: Fully Powered Stacker with Dual Mast - Adjustable Forks/Adjustable legs

Design: T.M.

Date: 03/26/2021